

OKI

OKI

UNMATCHED PRODUCTIVITY AND QUALITY

© Copyright 2017 OKI EUROPE LTD. OKI EUROPE LIMITED is a company registered in England under company number 02203086 its registered office being Blays House, Wick Road, Egham, Surrey, TW20 0HJ, UK. OKI EUROPE LTD is part of the Oki Electric group of companies. Specifications subject to change without notice. All trademarks acknowledged. Version Number 01/2018.



OKI EUROPE LTD
Blays House, Wick Road,
Egham Surrey, TW20 0HJ,
UK
Phone +44 (0)20 8219 2190
WWW.OKI.COM/EU

ColorPainter™ H3-104s



COLORPAINTER H3-104s
THE PROFESSIONAL
ALLROUNDER IN 104"

SX ink

+

ColorPainter H3-104s

=

Eco Ink

Low odor
Outstanding outdoor durability
Wide colour gamut with high density

Fast

High speed print heads
High volume ink bags + sub tanks
Short dry time

Precise

Superior image quality
Smart nozzle mapping

Reliable

High speed printheads
Reliable winding system
3 years warranty

Easy Operation

Automatic adjustments
Get message via mobile device
CP-Manager



Printed on roll-up banner

- Brilliant and bright presentation of photos
- Huge colour gamut
- Perfect print result for short viewing distance
- Printed on H3-104s

22 REVOLUTIONIZING REASONS FOR OUTSTANDING INKJET PERFORMANCE

1 Low odor eco solvent SX ink

2 Wide color gamut

3 Outstanding outdoor durability

4 High Density

5 CMYK Lc Lm + additional Grey + light Grey

3 High volume ink bags

4 Save Scanning System (Head protection)

1 High Speed Print Heads

2 Built-in Sub Tanks

1 Smart Pass Technology 4 (SP4)

2 Dynamic Dot Printing Technology

1 Mesh Printing Kit

2 High performance Winding System

3 Double side printing support

5 3 Year Warranty

4 Automatic washing machine for print heads

2 CP Manager

1 Automatic print adjustment

4 Easy access for fast technical service

3 Communication via mobile device

4 Premium manufactured printer

3 Smart Nozzle Mapping 2 (SNM 2)



AT A GLANCE

SPECIFICATION

Model	IP-7900-22-8c ColorPainter H3-104s
Print Head	Industrial High-Frequency drop-on-demand piezo print head
Number of Nozzles	508 nozzles/head
Maximum Resolution	900 x 900 dpi
Visual resolution	photorealistic printout
Maximum Media Width	2,642 mm (104")
Maximum Print Width	2,632 mm (103,6")
Printing Speed	3.5 to 56,6 m ² (38 to 609 sfph)
Media Weight	Up to 120 kg (264 lbs)
Maximum Media Diameter	media diameter 350mm (13,8")
Margin Size	5 mm (1/5") on each edge (with rolled media, without edge guards)
Ink Type	Eco-Solvent SX ink with Greengard certification
Color	8 (CMYK, Lc, Lm, Gy, Lgy)
Maximum ink capacity	1,5 Liter per colour
Media	vinyl, banner, paper, blueback, backlit, canvas, tech. textiles, mesh ...
Heater	3-way built-in heaters (Pre, Print, After)
Take-up Modes	tension or loosen inside or outside winding
Interface	USB 2.0
Power Source	200 bis 240 VAC, 12a, 50hz/60hz
Power Consumption Printer	Printer start up: 1440W or less standby 100W or less
Power Consumption Heater	Heater start up: 2880W or less, standby 5W or less
Operating Environment	15 – 30 °c (59 – 86 °f), 30 – 70 % rh (no condensation)
Storage Environment	5 – 35 °c (41 – 95 °f), 10 – 80 % rh (no condensation)
External Dimensions	4.126 (W) x 1.366 (D) x 1.513 (H), (163" x 54" x 60")
Weight	600 kg or less without media and inks

OPTIONS

Mesh kit	For printing on mesh without backing / including tensioner
Foot Switch	To operate take-up system
Scroller	Additional media roll for quick media change



REVOLUTIONIZING LOW-ODOR ECO SOLVENT INKJET PRINTER

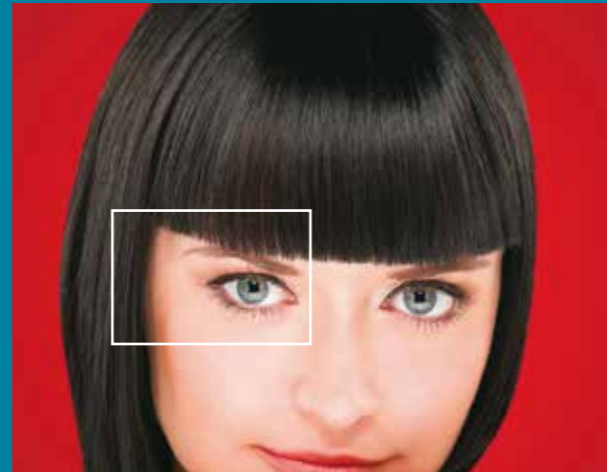
High-speed print engine plus Eco SX ink achieve unmatched performance for indoor and outdoor applications on 104" printer.

1 Low odor eco solvent SX ink

The ink covers the full range of long-life outdoor signage and high-quality indoor applications. In addition to low running costs the low odor ink does not smell on the final application. SX ink has an approval from the Nordic Ecolabel and a Greenguard Gold certification.

3 Outstanding outdoor durability*

SX ink by OKI has the same familiar high-class performance as its mild solvent GX ink. SX ink offers high-speed printing and outstanding image quality at the same time through precise drop control, high scratch resistance, good chemical durability etc. It offers UV stability of 3 years+ without lamination. It is also approved in the 3M MCS Warranty Program and the Avery ICS Warranty Program which offer much longer extended outdoor warranties.



5 CMYK Lc Lm + two additional Grey tones: Grey and Light Grey.

This 8-color printer offers two different Grey inks. The additional Grey and Light Grey enlarges the colour space and refines the soft gradients and shades, especially in skin tones and soft colours.

Another advantage is the creation of a real greyscale monochrome image, only printed with Black, Grey and Light Grey. In comparison to a CMYK greyscale picture this reduces ink costs.

2 Wide colour gamut

With its wide colour gamut, it is possible to print the widest range of standard RAL or Pantone colours, especially in the important Red and Blue tones.



3MTM MCSTM Warranty



36 month later

* Based on the results of accelerated weather test by OKI. OKI does not guarantee outdoor durability.



4 High Density

The SX ink achieves high-density colours and details in dark areas. It meets the customer's demand for sharp, clear and bright signs especially for backlit applications.



Monochrome picture printed on Vinyl
• High quality reproduction
• Perfect gradients of black shadings
• Printed on H3-1045



SMART AND INDUSTRIAL FEATURES FOR PRODUCTION ENVIRONMENTS

ColorPainter H3-104s provides unmatched productivity and quality while reducing impact on the environment.

1 High Speed Print Heads

Industrial high-frequency greyscale print heads realize a maximum print speed of 56,6 m²/h. Even production in High Speed Mode does not loose density. For special applications it is possible to increase density without reducing print speed.

2 Built-in Sub Tanks

One built-in sub tank per colour assures continuous printing without interruption of running print jobs while exchanging ink bags. Another advantage is that the ink bags will be emptied entirely.

3 High volume ink bags

1.5 liter ink bags support continuous high-volume printing. The printer is equipped with cartridge holders for 1.5 liter ink bags. Only the bags have to be exchanged. As ink is delivered in space-saving ink bags for reloadable cartridges we reduce landfill waste.

Banner	Max Speed (1)	56.6 smph (609 sfph)
	Max Speed (2)	37.7 smph (406 sfph)
	High Speed	25.1 smph (270 sfph)
	Normal	17.6 smph (189 sfph)
PVC	High Quality	9.8 smph (105 sfph)
	Max Quality	6.0 smph (65 sfph)

Print speed of printing on 104" wide media

4 Safe Scanning System (Print Head Protection)

This scanning system is constantly checking the media about wrinkles. It allows the operator after quickly pause the job to correct the media and then resume the print job without print job cancelation. This will help the operator to safe time, ink and media.



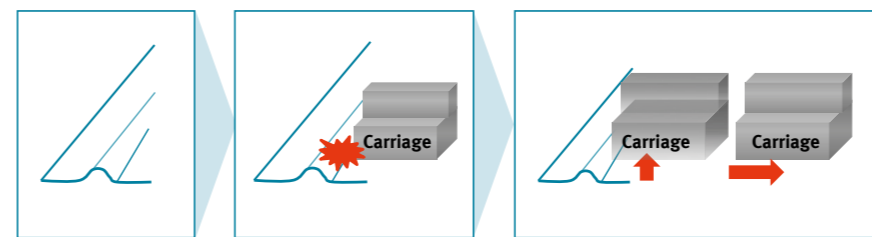
Industrial High Frequency Printhead

Drop on demand piezo head to create multiple drop sizes with stable density for any print mode.



Sub Tanks
View behind the dismantled cover:

8 x 400ml ink as a reservoir in the printer to support continuous printing.



Stop Printing

Art reproduction printed on canvas

- Motives gain extreme depth
- Outstanding colour intensity
- Brilliant, saturated colour coverage
- Printed on H3-104s

Precise

HIGH PRECISION TECHNOLOGY TO MAXIMIZE PRINT QUALITY

Innovative and unique technologies implemented in firmware and hardware



1 Smart Pass Technology 4 (SP4)

The special dot control algorithm of SP4 controls ink amount to generate the ideal ink drop size to result in a superior image quality. This makes the printer perfect for both, high-quality indoor and long-life outdoor applications and effectively eliminates banding without any loss in quality and speed.



2 Dynamic Dot Printing Technology

DDP controls and optimizes dot size and dot density to make consistently rich bold glossy colours with fine details. It also facilitates high density printing without detail and speed loss. This is ideal for backlighting applications.



3 Smart Nozzle Mapping 2 (SNM 2)

A new dot control algorithm has up-graded the performance of the Smart Nozzle Mapping function, compensating missing dots precisely when nozzle clogging occurs. It compensates up to 10 nozzles per print head without restricting the print quality or speed.

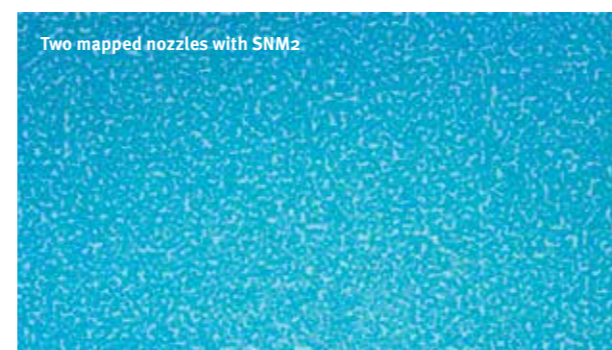
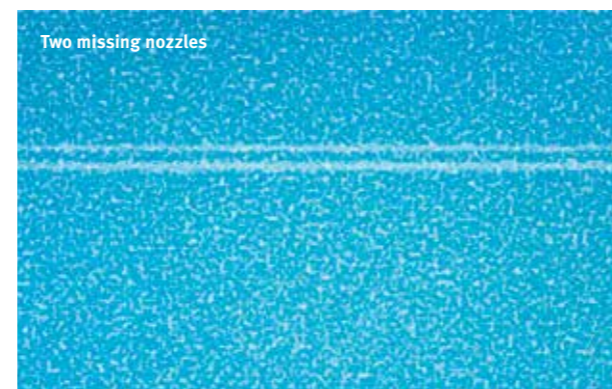
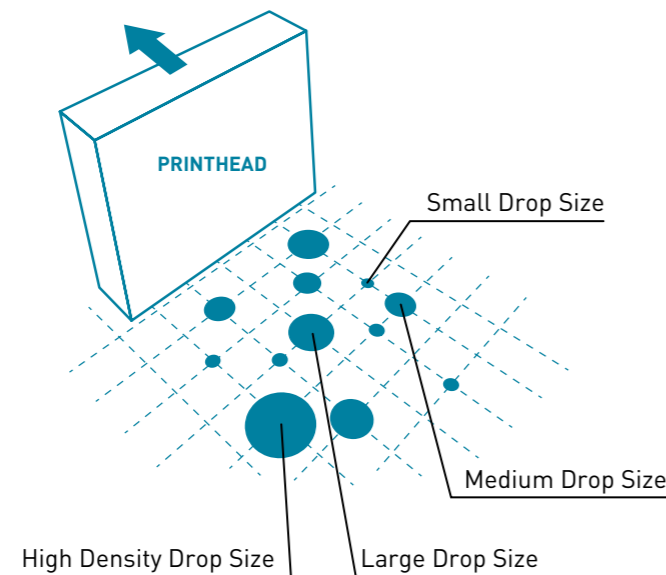
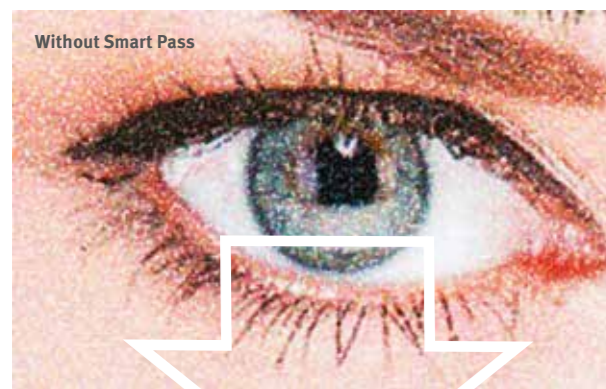
5 Premium manufactured printer

OKI printers stand for sturdy, reliable and precise construction, made for production environments and high quality awareness.



Window graphic (backlit)

- Excellent colour density
- With intensive deep Black
- Which blocks the light
- Printed on H3-104S



Reliable

INDUSTRIAL AND WELL DESIGNED CONSTRUCTION

Highly advanced engineering skills for mechanical, electronical and firmware development ensure extraordinary reliability.

1 Mesh printing kit

Optional mesh print ink tray enables printing on mesh banner without liner. This mesh kit includes a tensioner system for critical media to perform perfect feeding.

2 High performance winding system

The winding system for media feeding and take-up handles media up to 120kg weight . Roll to roll print in a perfect straight way for finishing. To handle critical media an optional tension system is available.

3 Double side printing support

An alignment line is printed to support double-sided printing. You can easily align the reverse side and face side along the lines.

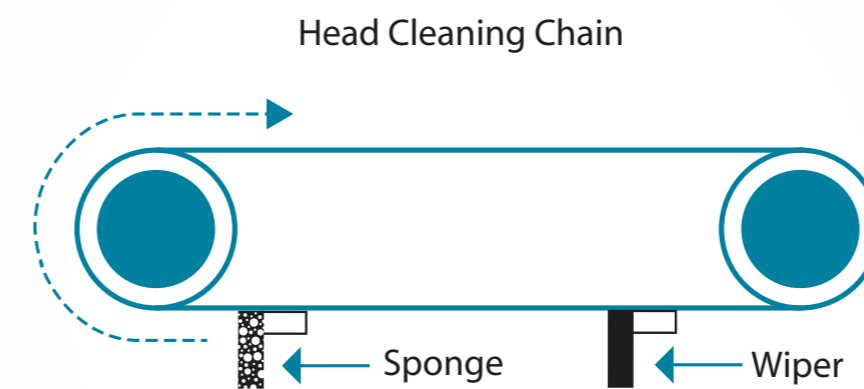
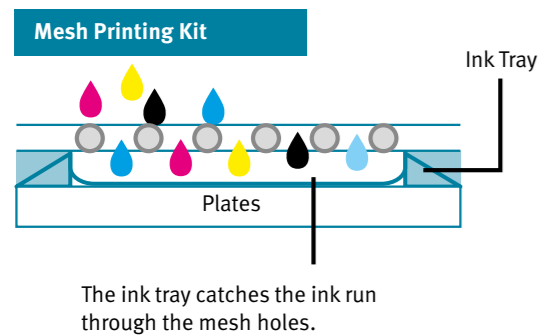
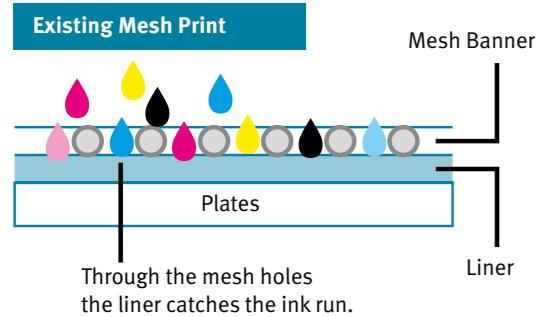
4 "Automatic washing system" for print heads

A "print head washing system" automatically moistens the print heads' surface with a sponge first and cleans them properly with a wiper afterwards. The cleaning will be performed with 8 cleaning chains in the left wiper station. This will clean directly all 8 heads at once to save time.

5 Warranty

We provide a warranty of 3 years on hardware and print heads, without any nozzle shot restriction. Ready for production.

Fast - Precise - Reliable = Ready for production!



- Label & Stickers**
- Excellent colour density
 - With intensive Deep Black
 - Which blocks the light

Easy
Operation

EASY TO OPERATE BY USER-FRIENDLY FEATURES

1 Automatic print adjustment

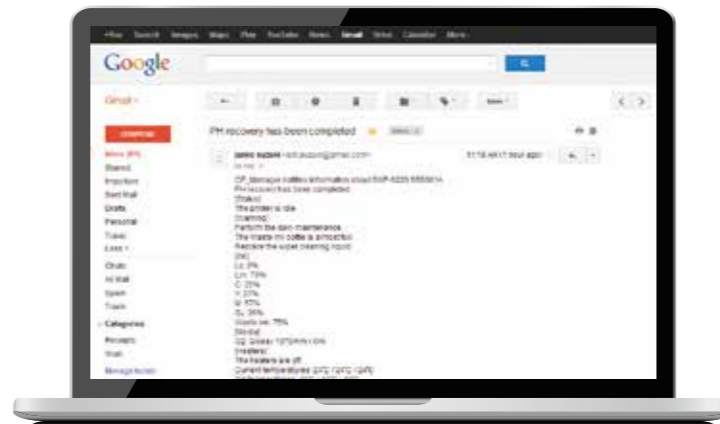
The printer has optical sensors that automatically perform both media advance and bi-directional position adjustment. The operator does not have to make complicated manual adjustment when a new media has been installed or when the print mode has been changed. This automatic print adjustment ensures high quality printing even for first time users.

2 Communicate via mobile device

Be more flexible and get printers messages via mail or tweet on your mobile device. Wherever you are in the next floor or at home you know what your printer is doing.

3 CP-Manager

Developed specifically for the ColorPainter printers. CP-Manager, the bundled controller software, provides the operator printing status, error or warning messages and offers an easy access to printer-settings and printer-parameter. Everything very easy via PC, mobile device or twitter.



Color On Time

Fast. Precise. Reliable.

Focusing on **"Time"**, OKI Data Infotech Corporation has been dedicated to pursuing the ideal for wide format printers for sign and graphics professionals. **"Color On Time"** represents our credo for **"Manufacturing"** with **"Fast"**, **"Precise"** and **"Reliable"** as the three key elements. We strive to develop and manufacture products and services that benefit customers' **"Time"**.

Backlit Samples – printed on H3-1045
• With details in dark shaded areas and smooth gradients in skin tones