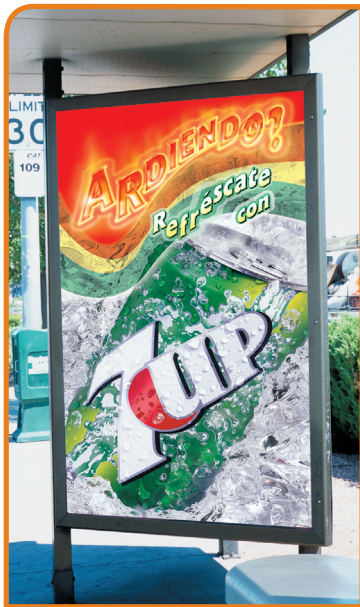




PV320

High Performance, Productivity and Versatility

Superwide Format Solutions



**efi** print to win.

---

# High-performance superwide printing within your reach.

The VUTEK® PV320 UV-curing printer from EFI™ delivers reliable, production-class printing without extra cost and complexity. The versatile 3.2 meter powerhouse supports both rigid and roll-to-roll applications to deliver advanced engineering and high-performance at a price that helps you grow output volumes and increase your profitability.



## Achieve Higher Productivity

EFI's VUTEk PV320 pushes productivity to the limit with its four-color engine that prints in user-selectable 400 or 600 dpi resolution print modes for high-quality, striking images.

Designed to accommodate rigid substrates up to 3.2 meters wide and 1.75 inches thick, EFI's reliable VUTEk PV320 produces up to 1,000 square feet (93 square meters) or twenty 4' x 8' boards per hour. Built for tough, around-the-clock duty, it delivers the consistent high-image quality and speeds your customers demand. In addition, job

setup is quick and easy, allowing you to spend less time preparing and more time producing sellable output. Other major features include:

- Superior front-to-back registration on rigid boards.
- Fast switching between printing on rolls and sheet material.
- VUTEk user interface with many productivity increasing features.

# Deliver new customer services and applications.



Switching from flatbed to roll-to-roll takes only a minute, eliminating delays. In addition, the durable UV-curing inks can be applied directly on flexible and rigid substrates, reducing the need for expensive finishing steps. Substrates that can be used include:

- Rigid substrates such as plastic, foam core and wood.
- Roll-to-roll substrates including vinyl, pressure sensitive materials, paper and many others.

Since EFI's VUTEk PV320 prints on rigid and roll-to-roll materials, you can offer clients a greater portfolio of applications and services, increasing your range of applications and profit margins.



# An ideal printer for a variety of popular and special applications.



- Point-of-purchase advertising
- Banners and signage
- Posters
- Exhibition graphics
- Backlit displays
- Display graphics
- Bus shelters
- Long-term outdoor graphics
- Exotic materials (wood and metal)
- DSCV Dynamic

## The EFI VUTEk Advantage

In today's fast-paced, highly-charged and competitive print-for-pay marketplace differentiating your company from the competition is critical. EFI delivers what no one else can — award-winning, integrated RIP, superwide printing systems and streamlined, automated business management systems. We are the market leader in print technology with services, support and scalable products that drive your business' success beyond the printer. The result is a true competitive advantage through increased capacity and capabilities without the corresponding increase in your overhead.





# Service you can count on today and tomorrow.

In the highly dynamic print-for-pay business landscape, downtime is the enemy. Your next job depends on your ability to deliver quality product — on time — today. EFI offers the training and service expertise that includes industry leading Enhanced Service Plans, printer and ink supplies and parts you need to keep your VUTEK PV320 running at top performance and quality levels. Count on us for industry benchmark support and training because we understand that service is your business lifeline.



## VUTEK Inks for Your Image

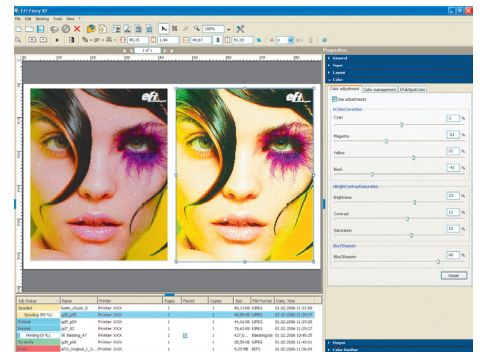
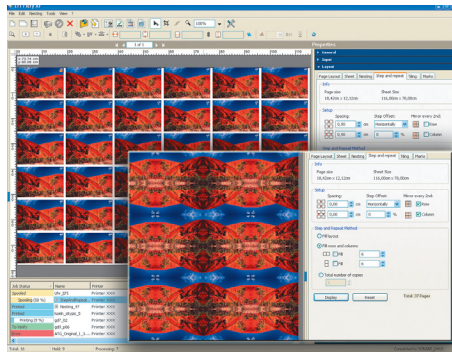
Your success depends on the inks you use. At EFI, we are dedicated to producing the highest quality inks in the world. Our VUTEK inks are engineered to produce the high-quality images your customers depend on across our entire range of printers. No other inks deliver the critical performance characteristics of purity, consistency and durability.



## EFI Fiery XF Production RIP

EFI Fiery® XF is a production RIP designed to process high volumes of jobs and deliver exceptional color management on tight schedules. It leverages the full range of image quality and production capabilities of the VUTEK PV320 to produce exceptional output every time. The flexible production RIP delivers the speed, high productivity and exceptional color consistency that your customers expect. It also maximizes the return on your current IT investment by improving output and reducing production time — translating into greater profits and shorter run times.

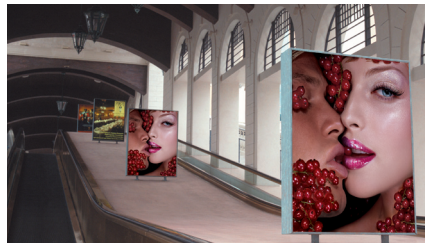
Fiery XF harnesses EFI and Bestcolor® Technology's high-performance software to deliver speed, high productivity and exceptional color quality to VUTEK superwide printers.



## EFI Print MIS Solutions

EFI's industry-standard print management information systems (EFI Print MIS) such as EFI Hagen™ and EFI Logic™ manage all your business operations — from estimating to order entry to shop floor data collection, inventory, invoicing and accounting. Unlike other solutions, these management systems are used by virtually every team member — giving them real-time information to streamline and make your processes more efficient and profitable at every stage of the business cycle.

EFI Print MIS products help you take full advantage of your VUTEK digital printers and other production equipment by providing an integrated solution that connects your shop floor management, communication and production workflow.



# Specifications

## VUTEk PV320

### Features and Benefits

- High quality, four color 400 or 600 dpi printing.
- Versatility of a UV flatbed printer.
- Excellent productivity of up to 1000 sq. ft./hr. (93 sqm/hr.) or up to 20 – 4' x 8' sheets/hr (14 – 2 meter x 3 meter sheets/hr.).
- 126 inch (3.2 meter) roll-to-roll capability.
- Excellent front to back print registration on rigid material.
- Quick change from rigid to roll-to-roll in one minute.
- Prints on rigid materials up to 1.75 inches (4.45 cm) thick.
- VUTEk user interface with many productivity increasing.

### Media/Handling

- Size: sheet and continuous feed, up to 126 inches (3.2 meters) wide.
- Type: flexible or rigid substrates up to 1.75 inches (4.45 cm) thick.

### Printing Technology

- Piezo drop-on-demand inkjet technology.
- VUTEk PV320: up to 360 x 400 dpi or 360 x 600 dpi.
- Print speed: Production quality 1000 sq. ft./h. (93 sqm/hr.); high quality 800 sq.ft./hr. (75 sqm/hr.), or highest quality up to 650 sqft/hr (60 sqm/hr).
- One-year printer warranty.
- Around-the-clock technical support.

### Formats

- All popular desktop file formats, including PostScript®3™, EPS, TIFF, PDF, RGB/CMYK.

### Environmental Considerations

- Compressed Air: 80 psi min., 150 psi max. at 4 cfm—dry air only.
- Temperature: 68° F to 85° F (20° C to 29° C).
- Humidity: 30% to 80% (non-condensing).
- Weight: 4914 lbs. (1834.1 kg).
- Height: 58.0" (147 cm).
- Width: 226.0" (574 cm).
- Depth: 63.0" (160 cm).  
+ 3" (7.6 cm) unwinder.  
+ 3" (7.6 cm) rewinder.
- Input and output tables add 51" (129.5 cm) each side.
- Electrical: single-phase, 65 amp, 200-240 VAC, 50/60 Hz.

### Fiery XF RIP

- Client/server architecture for decentralized remote operation.
- Unlimited clients for simultaneous set up of multiple jobs.
- Complete job management and set up both from Macintosh® and PC.
- Modern, intuitive graphical user interface with one click access to all job settings.
- Advanced, easy-to-use wizard-guided color tools for consistent predictable high color quality.
- Powerful production tools like nesting, step and repeat, scaling, cropping and tiling (flexible custom + automatic set up).
- Advanced ICC color management for reliable color quality output and proofing quality color on production level printers.
- Strong color recalibration, output quality and speed.
- Unlimited workflow and hot folder setup.
- File Output Module for output of color managed files to extend your

service portfolio.

- Scalable, versatile platform that grows with your needs as your business expands.
- Central RIP server that drives VUTEK superwide format printers, production printers, proofing printers and Fiery-driven xerographic devices (option). Proof your print on another printer simulating your VUTEk device and produce more sellable output on your VUTEK solution.
- Multi-lingual user interface and manuals.
- Exclusive platform for further EFI software integration.

### ColorBurst RIP Alternative

- Intuitive graphical user interface for easy operation and calibration.
- Multi-language graphical user interface.
- ICC color management.
- Advanced layout feature to simplify complex printing jobs.
- Automated contour cutting support.
- Innovative screenprint emulation mode.

### Inks

- EFI supplies VUTEk inks in 5.0 Liter containers available in cyan, magenta, yellow, black.

### Enhanced Service Plans

Eligible for:

- Critical – eight business hour (one business day) response.
- ProActive – 16 business hour (two business day) response.
- Essential – 24 business hour (three business day) response.

Beat the competition and profit with EFI's integrated Fiery, VUTEK and APPS printing solutions. Visit [www.efi.com](http://www.efi.com).

## Print to Win

EFI ([www.efi.com](http://www.efi.com)) is the world leader in color digital print servers, and controllers; superwide format printers and inks, industrial inkjet printing systems and print management, Web-to-print and proofing solutions. EFI is dedicated to giving customers a competitive edge with award-winning, scalable solutions from creation to print that maximize productivity and increase profits. EFI maintains 26 offices worldwide.